

## GRANITE

An igneous rock forged from the slow crystallization of magma below Earth's surface. Very hard and low in porosity, granite is exceptionally durable and resistant to scratching, heat, and staining — making it ideal for high-traffic areas. Its wide variety of natural colors and patterns give virtually unlimited design options.

### MAINTENANCE / CARE

Seal once a year. Clean with mild soap and warm water. Avoid harsh chemicals and abrasive pads.

### RESISTANCE RATINGS

Stain Resistance	●●●●●●	Scratch Resistance	●●●●●●
Heat Resistance	●●●●●●	Acid Resistance	●●●●●●
Cold Resistance	●●●●●●		

### SETTING

Interior / Exterior

### APPLICATIONS

Kitchen Countertops · Bathroom Vanities · Backsplashes · Walls · Floors · Fireplaces · Showers · Outdoor Spaces



LOW MAINT.

LOW HIGH

## QUARTZITE

A natural stone formed when sandstone is exposed to extreme heat and pressure deep within the Earth. Its crystals fuse tightly creating a hard, sparkling surface that combines the elegant veined look of marble with durability that surpasses granite. Quartzite is a sophisticated choice that is truly unique to each individual slab.

### MAINTENANCE / CARE

Seal periodically with a natural stone sealer. Clean with pH-neutral cleaners. Avoid abrasive scrubbers.

### RESISTANCE RATINGS

Stain Resistance	●●●●●●	Scratch Resistance	●●●●●●
Heat Resistance	●●●●●●	Acid Resistance	●●●●●●
Cold Resistance	●●●●●●		

### SETTING

Interior / Exterior

### APPLICATIONS

Kitchen Countertops · Bathroom Vanities · Backsplashes · Walls · Floors · Fireplaces · Showers · Outdoor Spaces



LOW MAINT.

LOW HIGH

## QUARTZ

Engineered material made from natural quartz ground into powder and mixed with resins, polymers, and pigments. More consistent in appearance than natural stone, it is highly stain and scratch resistant with minimal upkeep — no sealing ever required. Sensitive to heat and UV. VSI proudly offers Alleanza Quartz and Vadara Quartz collections.

### MAINTENANCE / CARE

No sealing required. Wipe clean with mild soap and water. Always use trivets — avoid direct heat.

### RESISTANCE RATINGS

Stain Resistance	●●●●●●	Scratch Resistance	●●●●●●
Heat Resistance	●●●●●●	Acid Resistance	●●●●●●
Cold Resistance	●●●●●●		

### SETTING

Interior Only

### APPLICATIONS

Kitchen Countertops · Bathroom Vanities · Backsplashes · Walls · Floors · Fireplaces



LOW MAINT.

LOW HIGH

## MARBLE

A calcium-carbonate based stone that exudes timeless elegance and luxury. The color range features many light, creamy whites and beiges; however, there are deep browns, gold, blacks, reds, and greens. When properly sealed, marble looks stunning in most interior spaces. Popular varieties include Carrara, Calacatta, Arabescato, and Danby.

### MAINTENANCE / CARE

Seal every 6–12 months. Clean spills immediately. Avoid all acidic cleaners — vinegar, lemon, and wine will etch the surface.

### RESISTANCE RATINGS

Stain Resistance	● ● ● ● ●	Scratch Resistance	● ● ● ● ●
Heat Resistance	● ● ● ● ●	Acid Resistance	● ● ● ● ●
Cold Resistance	● ● ● ● ●		

### SETTING

Interior Only

### APPLICATIONS

Kitchen Countertops · Bathroom Vanities · Backsplashes · Walls · Floors · Fireplaces



HIGH MAINT.

LOW HIGH

## DOLOMITE

Dolomite is considered by many in the countertop industry to be a more durable cousin to marble, and is a good option for countertops. It is slightly harder than the average marble, but softer than granite — offering a beautiful, elegant aesthetic with improved performance and resilience compared to standard marble.

### MAINTENANCE / CARE

Seal regularly. Use only pH-neutral cleaners. Avoid prolonged exposure to acidic substances.

### RESISTANCE RATINGS

Stain Resistance	● ● ● ● ●	Scratch Resistance	● ● ● ● ●
Heat Resistance	● ● ● ● ●	Acid Resistance	● ● ● ● ●
Cold Resistance	● ● ● ● ●		

### SETTING

Interior / Exterior

### APPLICATIONS

Kitchen Countertops · Bathroom Vanities · Backsplashes · Walls · Floors · Fireplaces



MED. MAINT.

LOW HIGH

## PRECIOUSTONE

Several varieties of select and precious gems are creatively interpreted in this rich collection. Amethyst, quartz, jasper, and agate are transformed into coverings of sheer class. These stones — particularly the translucent varieties — create unique color effects and add truly original, one-of-a-kind touches to any space.

### MAINTENANCE / CARE

Handle with care. Use soft cloths and gentle pH-neutral cleaners only. Avoid heavy impact and abrasive materials.

### RESISTANCE RATINGS

Stain Resistance	● ● ● ● ●	Scratch Resistance	● ● ● ● ●
Heat Resistance	● ● ● ● ●	Acid Resistance	● ● ● ● ●
Cold Resistance	● ● ● ● ●		

### SETTING

Interior Only

### APPLICATIONS

Bar Tops · Bathroom Vanities · Backsplashes · Walls · Fireplaces · Showers



HIGH MAINT.

LOW HIGH

## LIMESTONE

A sedimentary rock composed of calcite (calcium carbonate). One of the most significant advantages of limestone is its durability and timeless warmth. Dense and hard-wearing, it can withstand heavy foot traffic and resist scratches and stains when properly sealed. Ideal for high-traffic floors, walls, and outdoor spaces.

### MAINTENANCE / CARE

Seal regularly to prevent staining. Avoid all acidic products – vinegar, citrus, and wine will cause damage.

### RESISTANCE RATINGS

Stain Resistance	● ● ● ● ●	Scratch Resistance	● ● ● ● ●
Heat Resistance	● ● ● ● ●	Acid Resistance	● ● ● ● ●
Cold Resistance	● ● ● ● ●		

### SETTING

Interior / Exterior

### APPLICATIONS

Backsplashes · Walls · Floors · Fireplaces · Outdoor Spaces



HIGH MAINT.

LOW HIGH

## TRAVERTINE

Travertine is a type of limestone that precipitates from hydrothermal springs. It features soft, layered patterning in white-gray, golden-brown, sandy yellow, tan/beige, and red colorations. Rather than dramatic veining, travertine offers subtle, calming movement and visual texture – perfect for Mediterranean-style interiors.

### MAINTENANCE / CARE

Fill and seal regularly. Clean with pH-neutral stone cleaner. Avoid acid-based products. Re-fill pits periodically.

### RESISTANCE RATINGS

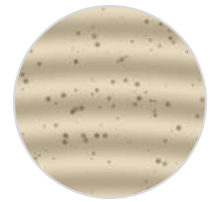
Stain Resistance	● ● ● ● ●	Scratch Resistance	● ● ● ● ●
Heat Resistance	● ● ● ● ●	Acid Resistance	● ● ● ● ●
Cold Resistance	● ● ● ● ●		

### SETTING

Interior / Exterior

### APPLICATIONS

Backsplashes · Walls · Floors · Fireplaces · Outdoor Spaces



HIGH MAINT.

LOW HIGH

## ONYX

Onyx is an agate gemstone available in every color of the rainbow – with black and red varieties being especially rare. It is a beautiful fine-grained stone with distinctive patterns. It is highly desirable for its unique appearance and adds a truly special touch. Onyx stones stand out because they are naturally translucent.

### MAINTENANCE / CARE

Seal frequently. Avoid heavy use in high-traffic areas. Clean gently with a soft cloth and mild cleaner only.

### RESISTANCE RATINGS

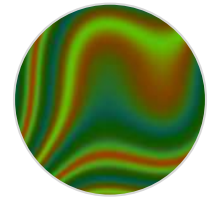
Stain Resistance	● ● ● ● ●	Scratch Resistance	● ● ● ● ●
Heat Resistance	● ● ● ● ●	Acid Resistance	● ● ● ● ●
Cold Resistance	● ● ● ● ●		

### SETTING

Interior Only

### APPLICATIONS

Kitchen Countertops · Bathroom Vanities · Backsplashes · Walls · Floors · Fireplaces



HIGH MAINT.

LOW HIGH

## SLATE

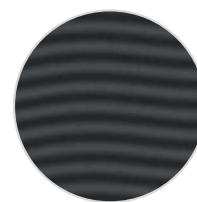
A metamorphic rock containing foliated layers of fine dark grey to black mica. A bit brittle compared to granite, slate is naturally non-porous, making it great for showers, sinks, and outdoor applications. It comes in beautiful shades of charcoal, gray, pewter, and brown with a bold, natural character.

### MAINTENANCE / CARE

Seal to enhance color and protection. Avoid sharp impacts at the edges. Clean with mild stone-safe cleaner.

### RESISTANCE RATINGS

Stain Resistance	●●●●●	Scratch Resistance	●●●●●
Heat Resistance	●●●●●	Acid Resistance	●●●●●
Cold Resistance	●●●●●		



**MED. MAINT.**

LOW HIGH

### SETTING

Interior / Exterior

### APPLICATIONS

Kitchen Countertops · Bathroom Vanities · Backsplashes · Walls · Floors · Fireplaces · Outdoor Spaces

## QUARTZ VS. QUARTZITE

What's the Difference?

Both names sound similar but these are very different materials. Quartz is engineered in a factory. Quartzite is a natural stone. Here's a simple side-by-side breakdown to help you choose.

### QUARTZ — Engineered Stone

- Ground quartz + resins, polymers & pigments
- Very consistent, uniform pattern throughout
- Highly stain & scratch resistant
- No sealing required — zero maintenance
- Sensitive to heat — use trivets always
- Interior use only — UV causes fading outdoors

### QUARTZITE — Natural Stone

- Natural sandstone transformed by heat & pressure
- Unique sparkling veins — no two slabs identical
- Harder than granite — extremely scratch resistant
- Requires periodic sealing like all natural stones
- Highly heat resistant — safe near stovetops
- Suitable for interior and exterior applications

### QUICK COMPARISON TABLE

	Quartz	Quartzite
<b>Material Type</b>	Engineered Stone	Natural Stone
<b>Heat Resistance</b>	Low — use trivets	High — stovetop safe
<b>Outdoor Use</b>	Not recommended	Yes — interior & exterior
<b>Sealing Needed</b>	None — ever	Yes — periodically
<b>Maintenance</b>	Very Low	Low to Medium
<b>Best Application</b>	Kitchens, families	Luxury countertops

## WHICH STONE SHOULD I CHOOSE?

Quick Reference Guide

YOUR GOAL	BEST CHOICE	WHY IT WORKS
Best for Low Maintenance	<b>Quartz</b>	No sealing ever. Stain & scratch resistant. Great for busy households.
Best Natural Stone Durability	<b>Granite</b>	Extremely hard and long-lasting. Resists heat, scratches, and stains.
Best Luxury / High-End Aesthetic	<b>Marble</b>	Timeless elegance with dramatic veining. Requires care and regular sealing.
Marble Look – But Stronger	<b>Quartzite</b>	Harder than granite, sparkles like marble. Highly heat resistant.
Best for Wet Areas & Outdoors	<b>Slate</b>	Naturally non-porous. Ideal for showers, sinks, and exterior spaces.
Best Classic / Earthy Warmth	<b>Travertine or Limestone</b>	Warm organic tones. Perfect for Mediterranean and transitional styles.
Best Decorative Statement Piece	<b>Onyx or Precioustone</b>	Translucent with dramatic color. Extraordinary for feature walls and bars.

Natural stone varies in mineral composition, porosity, and hardness. All resistance ratings are general guidelines and not guarantees. Performance may vary by quarry source, finish, and usage.